

Technical parameters:

Model	Q111
Capacity (t/class)	0.8-2.5
Total power (kw)	21
Cooling capacity (kcal / h)	21800
Mold plate size (mm)	280*200*30
Mold plate size (each)	270
Weight (kg)	4800
External dimensions (mm)	17010*1010*1330

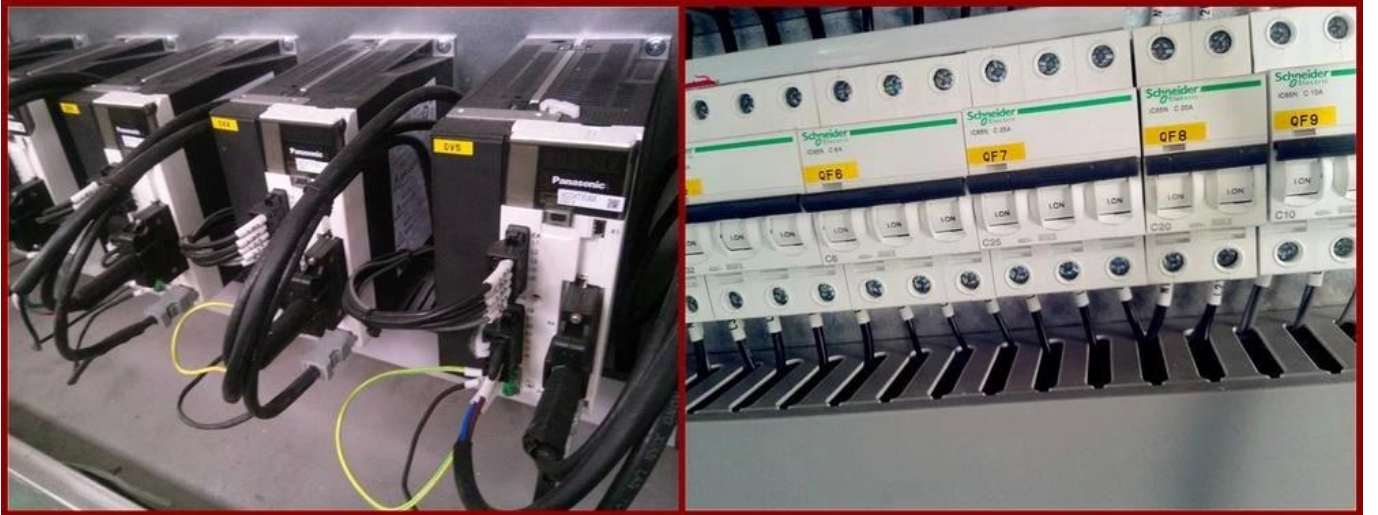
Function:

The molding machine is for chocolate deposit forming. The whole process is fully automatic, including depositing, mold plate vibrating, cooling, demoulding, conveying and plate heating. You can choose one head semi automatic, one head, two heads or three heads molding machine for different products. The line is for pure chocolate, filled chocolate center, two colors chocolate, four colors chocolate, amber or agate chocolate, etc.

Details:









Our factory:





Certifications:

CERTIFICATES FOR QUALITY ASSURANCE

<p>CE</p>	<p>CE</p>	<p>Patent Certificate</p>	<p>ISO</p>	<p>ISO</p>
<p>Equipment variety complete, reasonable price !</p>			<p>Excellent quality assurance, customer service !</p>	

Clients can be found at:

