

Technical Parameters:

Model	Q110
Capacity(ton/class)	0.5-1.5
Total power(kw)including freezer	9
Refrigeration capacity(Kcal/h)	no(Q110 has no cooling tunnel)
Mould plate size(mm)	275*175*30
Mould plate quantity(each)	270
Weight(kg)	1000
Outside dimensions(mm)	3600*725*1560

Function:

The moulding line is for chocolate deposit forming. The whole process includes: depositing, mould plate vibrating, cooling, demoulding, conveying and plate heating(Q110 equiped with push&dry moulds extra).

Packaging & Delivery:

1. The machine will be packed in a wooden case, avoiding unexpected damage.
2. The machine will be shipped from Shanghai port.

Service:

1. Along with the separate machines, our company also has an ability to deliver integrated solutions for the manufacture of the chocolate product.
2. Engineers are available for traveling to the customer's site overseas, in order to launch and maintain machines, as well as to provide a team training at the customer's location.

Details:

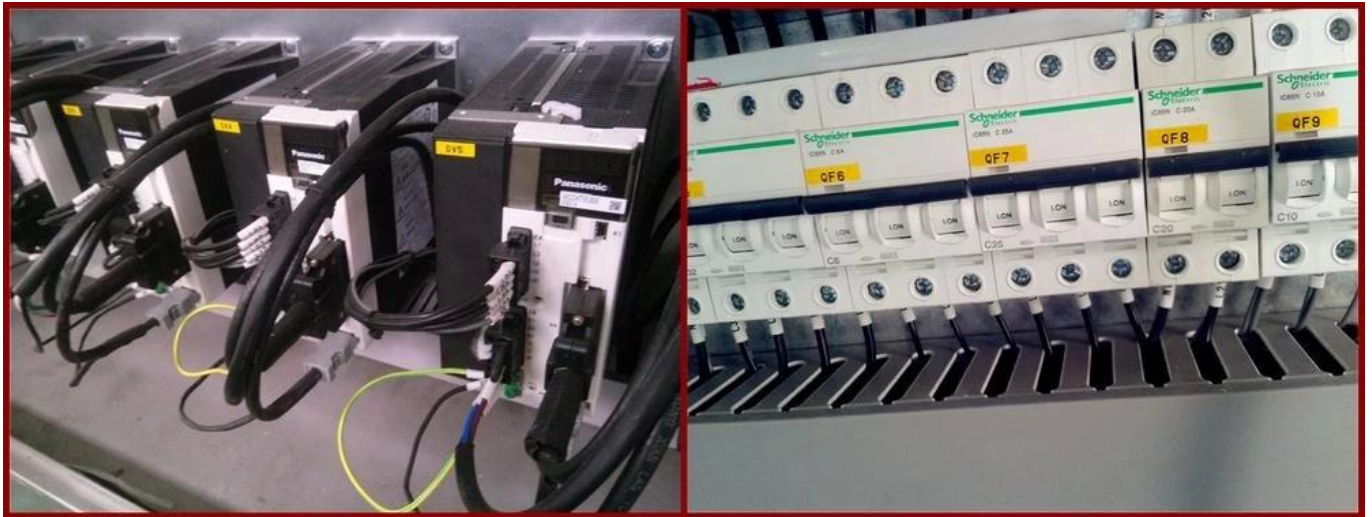


Our expertise lies in supplying, installing, teaching you how to use it, project management. We can do A-Z installations.



1 Product details





Chocolate Products:

2 Chocolates



If you need help or require chocolate machinery or start up factories, let me know contact us, we can steer you in the right direction.

Factory:





Certifications:



Clients:

