

#### Technical Parameters:

Model	Q113
Capacity(ton/lass)	0.8-2.5
Total power(kw)	28
Refrigeration capacity(Kcal/h)	21000
Mould plate size(mm)	280*200*30
Mould plate quantity(each)	420
Weight(kg)	6200
Outside dimensions(mm)	18600*1200*2400

#### Function:

The moulding line is for chocolate deposit forming.

The whole process is fully automatic including depositing, mould pate vibrating, cooling,demoulding, conveying and plate heating.

You can choose one headsemiautomaitc, one head, two heads or three heads moulding line for different products.

The line is suitable for pure chocolate, center filled chocolate, two colors chocolate, four colors chocolate,amber or agate chocolate ,etc.

#### Service:

1. Along with the separate machines, our company also has an ability to deliver integrated solutions for the manufacture of the chocolate product.
2. Engineers are available for traveling to the customer's site overseas, in order to launch and maintain machines, as well as to provide a team training at the customer's location.

#### Detail:



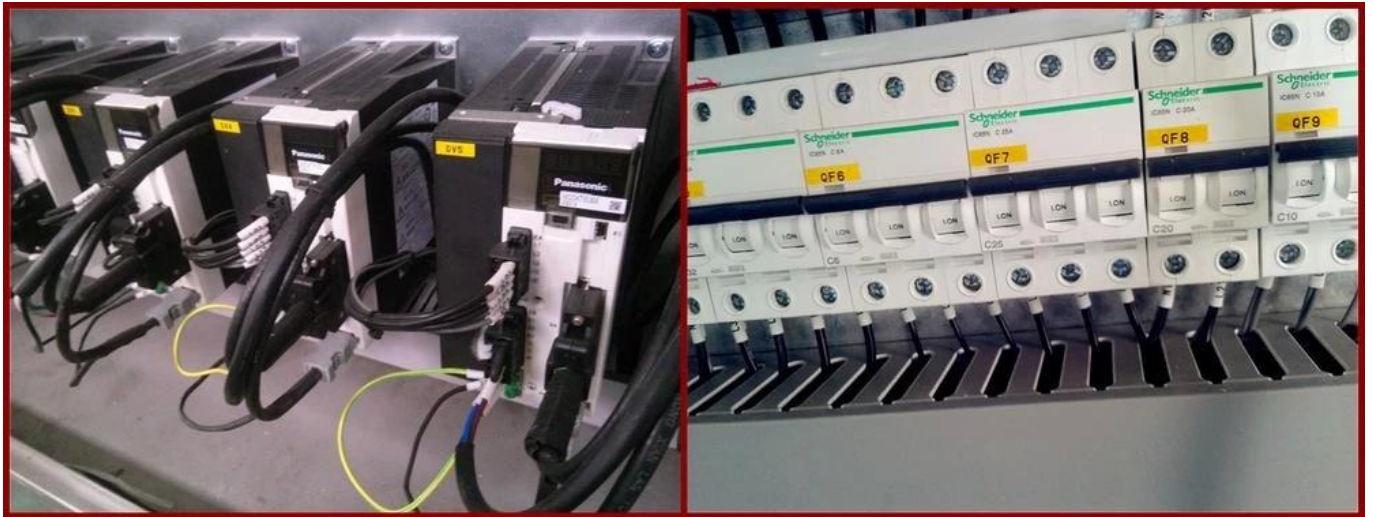
**Yes, we can! Ok, we do!**  
**Quality, we promise!**



<http://www.aemost.com/>

**CE ISO**





Our Factory







Certificates:



Clients visit:

