

## Technical Parameters:

Model	Q111
Capacity(ton/class)	0.8-2.5
Total power(kw)	21
Refrigeration capacity(kcal/h)	21800
Mould plate size(mm)	280*200*30
Mould plate quantity(each)	270
Weight(kg)	4800
Outside dimensions(mm)	17010*1010*1330

## Function:

The moulding line is for chocolate deposit forming.

The whole process is fully automatic including depositing, mould pate vibrating, cooling,demoulding, conveying and plate heating.

You can choose one head semi-automaitic, one head, two heads or three heads moulding line for different products.

The line is suitable for pure chocolate, center filled chocolate, two colors chocolate, four colors chocolate, amber or agate chocolate,etc.

## Service:

1. Along with the separate machines, our company also has an ability to deliver integrated solutions

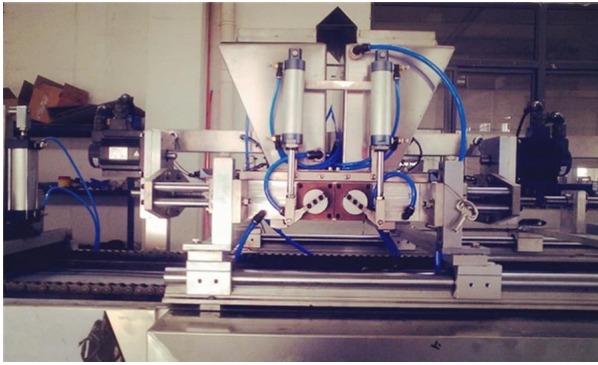
for the manufacture of the chocolate product.

2. Engineers are available for traveling to the customer's site overseas,

in order to launch and maintain machines, as well as to provide a team training at the customer's location.

## Details:

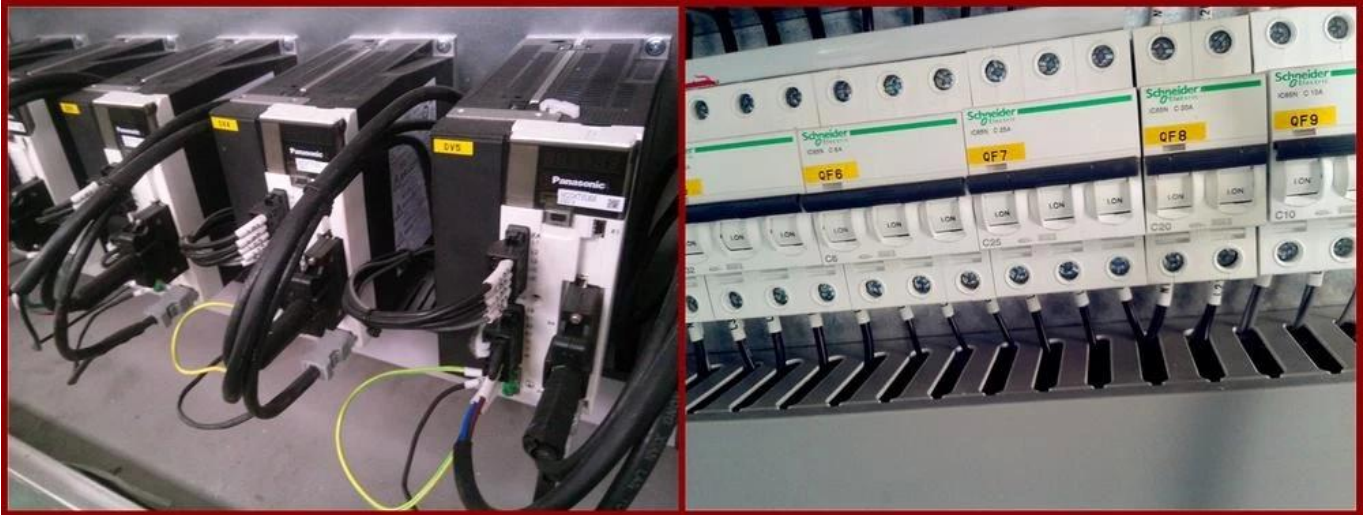




1

## Product details







**Our Factory:**





**Certifications:**



**Clients visit:**



**China bar making machine manufacturer**